

# ZensorCellStand

Model: CS100



Temperature:  
Thermostatic Control



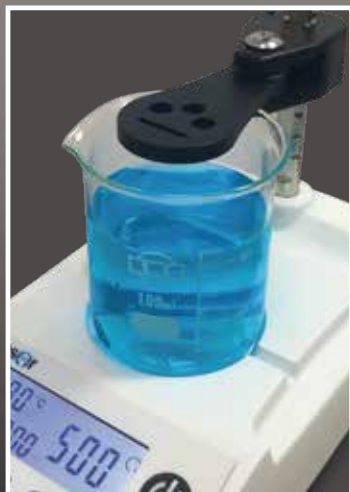
Stir:  
Clockwise & Counterclockwise



Time:  
Countdown Control



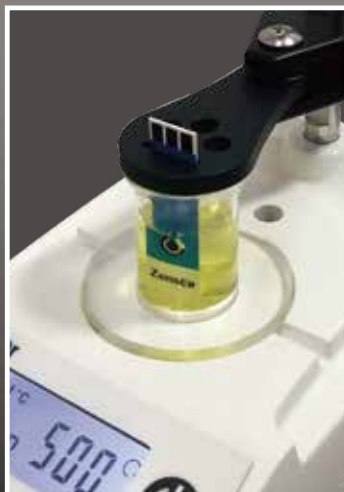
## Product in action



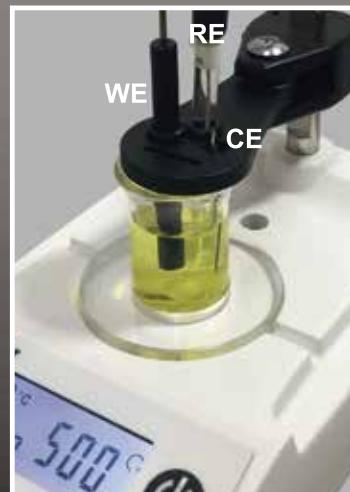
1 For 50-500ml beaker



2 For 10-20ml beaker



3 For screen printed three electrode



4 For traditional three electrode

## Specification

Model	CS100
Plate temperature regulation range	20~40 $\pm$ 2 $^{\circ}$ C
Speed control range	500~1500 rpm $\pm$ 5 %
Max. stirring volume	100 mL
Diameter of working plate	53 mm
Working surface material	ABS
Overall dimensions (WDXH)	106 *165 *56 mm, 260 mm (with mast)
Weight	500 g
Nominal operating voltage	110-240 V, 50-60 Hz, 0.25 A

